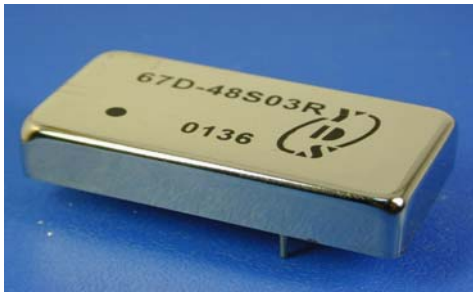




Wide Input Voltage Range 15 Watt Dc-Dc Converter



FEATURES:

- 2:1 Wide Input Voltage.
- Recognized By UL 60950-1
- 15 Watt Package.
- Efficiency To 80%
- PI Input Filter.
- 1500Vdc Isolation
- MTBF:>1,500,000 hrs
- Operating Temperature:-40°C TO +100°C



Specifications typical at TA=25°C, nominal input voltage and rated output current unless otherwise specified

Part Number	Input Voltage	Input Current		Output Voltage	Output Current	Efficiency	Capacitor Load
	Vdc	No-Load (mA TYP)	Full Load (mA TYP)	Vdc	Full Load (mA)	%TYP	uF TYP
67D-12S05RNL	9-18	30	1524	5	3000	82	2200
67D-12S09RNL	9-18	30	1470	9	1666	85	1000
67D-12S12RNL	9-18	30	1470	12	1250	85	1000
67D-12S15RNL	9-18	30	1470	15	1000	85	680
67D-12S18RNL	9-18	30	1470	18	833	85	470
67D-12S24RNL	9-18	30	1453	24	625	86	470
67D-12D05RNL	9-18	30	1524	±5	±1500	82	±1000
67D-12D09RNL	9-18	30	1488	±9	±833	84	±470
67D-12D12RNL	9-18	30	1488	±12	±625	84	±470
67D-12D15RNL	9-18	30	1488	±15	±500	84	±330
67D-12D18RNL	9-18	30	1470	±18	±416	85	±220
67D-12D24RNL	9-18	30	1470	±24	±312	85	±220
67D-24S05RNL	18-36	25	744	5	3000	84	3300
67D-24S09RNL	18-36	25	735	9	1666	85	1000
67D-24S12RNL	18-36	25	735	12	1250	85	1000
67D-24S15RNL	18-36	25	726	15	1000	86	680
67D-24S18RNL	18-36	25	726	18	833	86	470
67D-24S24RNL	18-36	25	718	24	625	87	470
67D-24D05RNL	18-36	25	753	±5	±1500	83	±1000
67D-24D09RNL	18-36	25	735	±9	±833	85	±470
67D-24D12RNL	18-36	25	735	±12	±625	85	±470
67D-24D15RNL	18-36	25	735	±15	±500	85	±220
67D-24D18RNL	18-36	25	718	±18	±416	87	±220
67D-24D24RNL	18-36	25	718	±24	±312	87	±220
67D-48S05RNL	36-72	20	372	5	3000	84	3300
67D-48S09RNL	36-72	20	367	9	1666	85	1000
67D-48S12RNL	36-72	20	363	12	1250	86	1000
67D-48S15RNL	36-72	20	359	15	1000	87	680
67D-48S18RNL	36-72	20	359	18	833	87	470
67D-48S24RNL	36-72	20	359	24	625	87	470
67D-48D05RNL	36-72	20	372	±5	±1500	84	±1000
67D-48D09RNL	36-72	20	367	±9	±833	85	±470
67D-48D12RNL	36-72	20	363	±12	±625	86	±470
67D-48D15RNL	36-72	20	359	±15	±500	87	±330
67D-48D18RNL	36-72	20	359	±18	±416	87	±220
67D-48D24RNL	36-72	20	359	±24	±312	87	±220



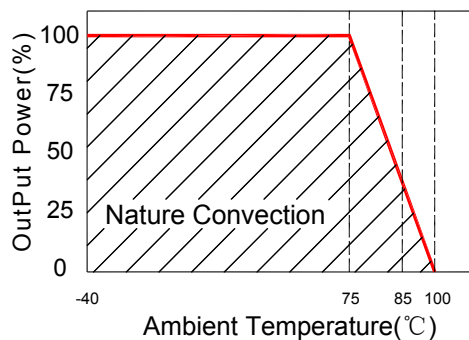
Wide Input Voltage Range 15 Watt Dc-Dc Converter

Input Specifications					
Parameters	Conditions	Min	Typ	Max	Units
Voltage Types				2:1	
Filter	Pi TYPE				

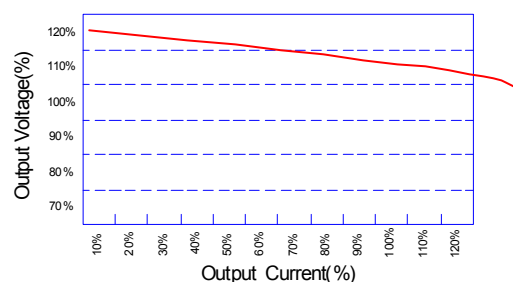
Output Specifications					
Parameters	Conditions	Min	Typ	Max	Units
Voltage Tolerance				±2	%
Short Circuit Protection	Continuous				
Line Regulation				±0.5	%
Load Regulation	Single(25% To 100% F.L)			±1.0	%
Load Regulation	Dual(25% To 100% F.L)			±2.0	%
Ripple & Noise	BW=DC To 20MHz			100	mVp-p
Transient response setting time	50% load step change		350		us

General Specifications					
Parameters	Conditions	Min	Typ	Max	Units
Isolation Resistance	500Vdc	1000			MΩ
Switching Frequency			300		KHz
Operating Temperature		-40		100	°C
Humidity	Non Condensing			95	%
Cooling	Free air Convection				
Case material	Nickel Coated With Non-Conductive Base or Black Coated Copper With Non-Conductive Base				
Weight			36.5		g
Dimensions		50.8x25.4x10.2			mm
Potting Material	Epoxy (UL94V-0 rated)				
Radiated Emissions	EN55022	CLASS A			
Radiated Emissions	FCC 47 CFR Part 15SubpartA	CLASS A			

Temperature Derating Graph



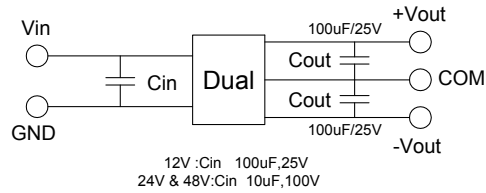
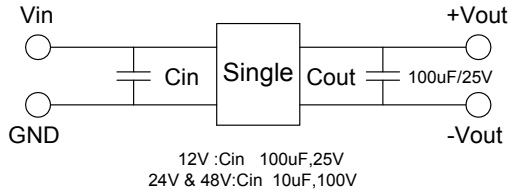
Tolerance Envelope Graph





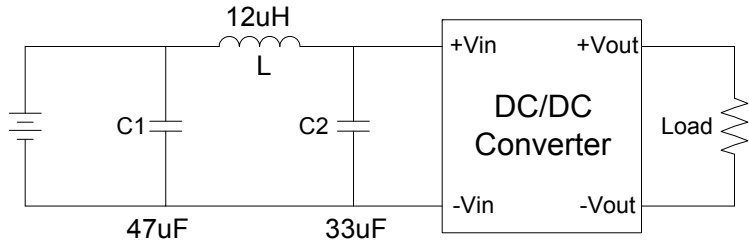
Wide Input Voltage Range 15 Watt Dc-Dc Converter

Recommended Test Circuit Part Number

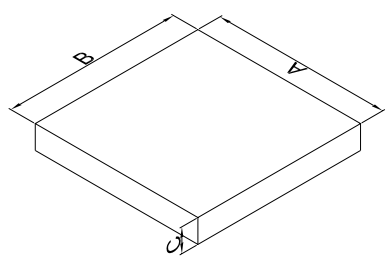
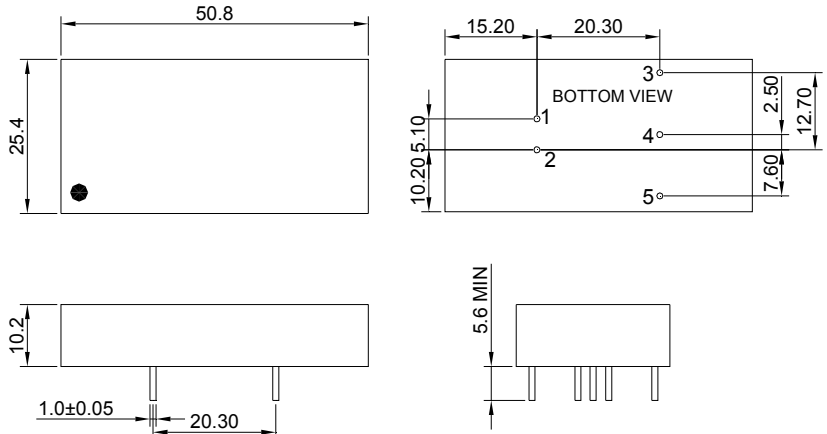


67D - 12 S 05 R NL
A B C D E F
A:Series
B:Input Voltage
C:Single(S)Dual(D)
D:Output Voltage
E:Regulated(R)
F:RoHS Version

Suggest adding input external filter(C1,C2,L)to meet conducted emissions (EN55022 class A)



Markings and dimensions Packaging



UNIT:mm XX.X±0.5 XX.XX±0.25

Size(mm)		
A	B	C
210.00	210.00	30.00

PIN Connection

PIN	1	2	3	4	5
SINGLE	+Vin	-Vin	+Vout	NO PIN	-Vout
DUAL	+Vin	-Vin	+Vout	COM	-Vout